

# AccurioPress 6136/6136P/6120

- ✧ B/W SRA3+ digital press
- ✧ Up to 7,940 A4 pages per hour

In the fast-growing, digital high-volume print market, in-house printers and graphic communications providers have to focus on building up their business by producing a wider range of high-volume jobs more efficiently. For that, they need the best performance available in the market: The AccurioPress 6136 series comprises three models, the fastest of which provides a maximum speed of 7,940 A4 pages per hour. Latest technologies guarantee maximum uptime and outstanding black and white print quality. The superior product outline impresses with a comprehensive range of inline finishing options.



**AccurioPress**  
6136/6136P/6120

**B/W PRODUCTION PRINTING SYSTEM**

# YOUR ADVANTAGES WITH AccurioPress 6136/6136P/6120

## DURABLE PERFORMANCE

AccurioPress 6136/6136P

- Up to 136 A4 pages per minute
- Up to 74 SRA3 pages per minute
- Up to 7,940 A4 pages per hour
- Up to 4,274 SRA3 pages per hour

AccurioPress 6120

- Up to 120 A4 pages per minute
- Up to 66 SRA3 pages per minute
- Up to 7,034 A4 pages per hour
- Up to 3,846 SRA3 pages per hour

## HIGHEST RELIABILITY

- Long-life platform, long-lasting parts and consumables
- Optimum registration results via ICCU
- Belt transfer system
- For prints with maximum efficiency
- For lucrative short-run printing

## READY-MADE PRINT PRODUCTS

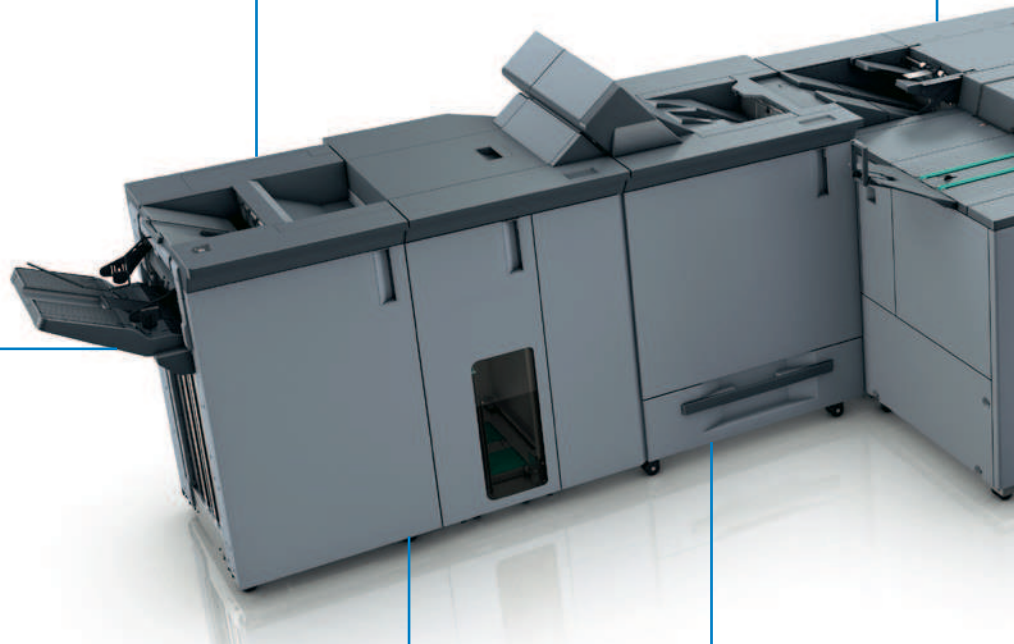
- 50-sheet booklet making with front trimming and optional creasing, slitting and spine corner forming
- 102-sheet auto ring binding
- Perfect binding for books of up to 30 mm
- 100-sheet stapling with cutting mechanism
- For highest automation and enormous productivity
- For more profit in the printroom

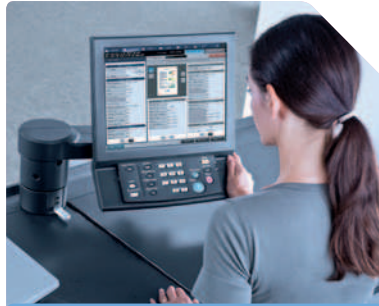
## GEARED-UP FINISHING

- Multi (GBC) punching and 2- & 4-hole punching
- 6 different types of folding
- Interface for 3rd parties
- Large stacking
- Minimised human interaction
- For optimised budgets

## 3RD PARTY FINISHING:

- Watkiss PowerSquare™ 224 KR for square back booklet binding
- Plockmatic SD-500/SD-350 booklet maker with square fold
- GBC Punch G2 for heavy duty punching
- For higher flexibility
- For more sophisticated print products





#### HIGH-END PRINT CONTROL

- Proprietary Konica Minolta controller
- For intuitive operation
- Saves time and money

#### EASE OF USE

- Simple paper catalogue settings
- Easy-to-follow on-screen instructions
- Operator Replaceable Unit Management (ORUM)
- For maximum ease of operation
- Frees operators for more important jobs

#### SOPHISTICATED MEDIA HANDLING

- Air-suction or air-assist feeding technology
- Up to 18,000-sheet paper input capacity or 14,000-sheet paper input and 5,000-sheet post insertion
- Up to 11 paper input trays
- For enhanced overall productivity
- For extreme cost savings

#### COMPREHENSIVE MEDIA PROCESSING

- Up to 350 gsm paper weight in simplex & 300 gsm duplex printing
- Skew Detection System to prevent paper skew
- Professional feeding of coated media and envelopes
- Mechanical decurling as standard
- Optional inter-cooler curl eliminator
- For highly flexible print products
- Stands out from the competition

#### PERFECT IMAGE QUALITY

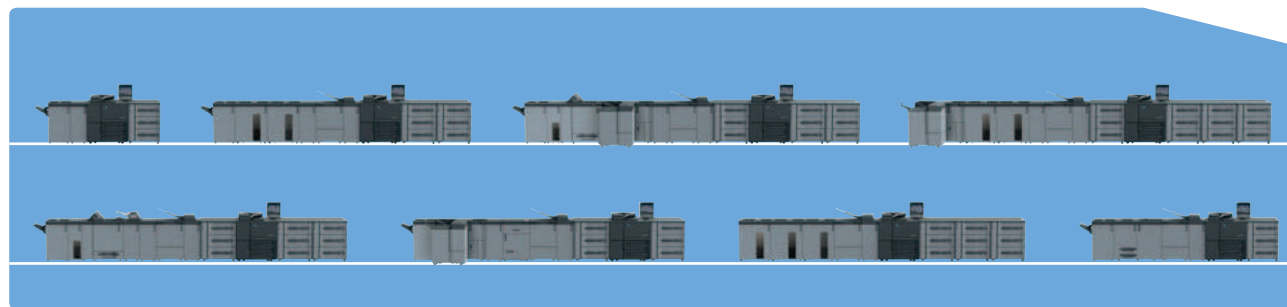
- 1,200 x 1,200 dpi resolution
- Tone Curve Utility
- Simitri® HD toner technology
- Image density control technology
- For new print applications
- For growing your business

**Simitri HD**  
High Definition Polymerised Toner

#### ENVIRONMENTAL AWARENESS

- Green procurement policy
- ISO 14001-certified
- For reduced environmental impact
- Carbon Neutral Printing via “Enabling Carbon Neutrality Program” available

## Recommended configurations



## Technical specifications

### SYSTEM SPECIFICATIONS

Resolution	1,200 x 1,200 dpi
Paper weight	40–350 gsm
Duplex unit	Non-stack type; 40–300 gsm
Paper sizes	Min.: 95 x 139 mm Max.: 324 x 483 mm (with PF-710)
Maximum image area	314 x 483 mm (with PF-710)
Paper input capacity	Standard: 3,000 sheets Max.: 18,000 sheets
Paper output capacity	Max.: 15,000 sheets (plus sub trays)
Main unit dimensions (W x D x H)	990 x 910 x 1,454 mm
Main unit weight	396 kg

### PRODUCTIVITY

#### AccurioPress 6136/P

A4 - max. per minute	136 ppm
A3 - max. per minute	78 ppm
SRA3 - max. per minute	74 ppm
A4 - max. per hour	7,940 pph
A3 - max. per hour	4,526 pph
SRA3 - max. per hour	4,274 pph

#### AccurioPress 6120

A4 - max. per minute	120 ppm
A3 - max. per minute	70 ppm
SRA3 - max. per minute	66 ppm
A4 - max. per hour	7,034 pph
A3 - max. per hour	4,072 pph
SRA3 - max. per hour	3,846 pph

### CONTROLLER

#### Embedded Konica Minolta Controller

### SCANNER SPECIFICATIONS\*

Scan speed A4	Up to 240 ppm
Scan resolution	600 x 600 dpi
Scan modes	TWAIN scan; Scan-to-HDD; Scan-to-FTP; Scan-to-SMB; Scan-to-eMail
Scan formats	TIFF; PDF; Encrypted PDF; XPS; CompactPDF; JPEG

### COPIER SPECIFICATIONS\*

Gradations	256 gradations
FCOT	Less than 2.6 sec. (A4 LEF)
Magnification	25–400%, in 0,1% steps
Multiple copies	1–9,999

### ACCESSORIES

Integrated Color Care unit	IQ-501
Air assist paper feed unit	PF-709
Pre-printed paper feed kit for PF-706	PP-701
Air suction paper feed unit	PF-710
Heating unit for PF-710	HT-506
Post Insertion unit	PI-PFU
Relay unit	RU-518
Humidification unit	HM-103
Multi (GBC) punching unit	GP-501
Relay unit	RU-510
Auto ring binding unit	GP-502
Folding and punching unit	FD-503
Stacking unit	LS-506
Booklet making unit	SD-506
Booklet making unit	SD-513
Creasing unit for SD-513	CR-101
Slitting unit for SD-513	TU-503
Spine corner forming unit for SD-513	FD-504
Perfect binding unit	PB-503
Stapling unit	FS-532
Saddle stitch kit for FS-532	SD-510
Punch kit for FS-532	PK-522
Post inserter for FS-532	PI-502
Open Stacker	OT-510
Envelop fuser	EF-105
Mount kit for 3rd party	MK-737
Removable HDD Kit	RH-101 & HD-511
Watkiss PowerSquare™ 224KR	
Plockmatic	SD-500/SD-350
GBC Punch G2	

- All specifications refer to A4-size paper of 80 gsm quality.
- The support and availability of the listed specifications and functionalities varies depending on operating systems, applications and network protocols as well as network and system configurations.
- The stated life expectancy of each consumable is based on specific operating conditions such as page coverage for a particular page size (5% coverage of A4).
- The actual life of each consumable will vary depending on use and other printing variables including page coverage, page size, media type, continuous or intermittent printing, ambient temperature and humidity.
- Some of the product illustrations contain optional accessories.
- Specifications and accessories are based on the information available at the time of printing and are subject to change without notice.
- Konica Minolta does not warrant that any prices or specifications mentioned will be error-free.
- All brand and product names may be registered trademarks or trademarks of their respective holders and are hereby acknowledged.

\* Not for AccurioPress 6136P